

New Product Announcement!



Direct-acting
Relief valve
6000 psi (420 bar)
Sun Common

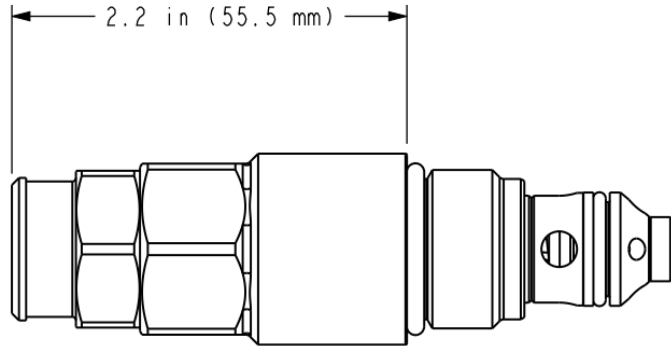
Model: RDU A

For detailed specifications visit www.sunhydraulics.com

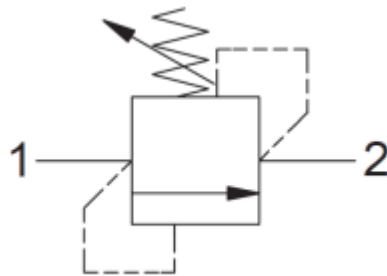


RDU A

Cartridge Dimensional Drawing



Functional symbol





RDU A

Technical Features

This direct-acting relief cartridge is a normally closed, pressure-limiting device used to protect hydraulic systems from over pressurization. When the pressure at the inlet (Port 1) reaches the valve setting, the valve opens to tank (Port 2) to prevent over pressurization. This valve is dirt-tolerant and is designed to be very fast-acting with a low rate of pressure rise, but at the expense of smoothness.

- The adjust mechanism under the tamper resistant cap can be fully uninstalled while the valve is in the cavity. This will expose system fluid to the atmosphere. Care should be taken when adjusting the valve setting while installed. The setting procedure is: check the setting, remove the pressure, adjust the valve, check the new setting.
- Not suitable for use in load-holding applications.
- Back pressure on the tank port (Port 2) is directly additive to the valve setting at a 1:1 ratio.
- The cartridge installation torque of 44 lbf ft (60 Nm) is required for best performance.

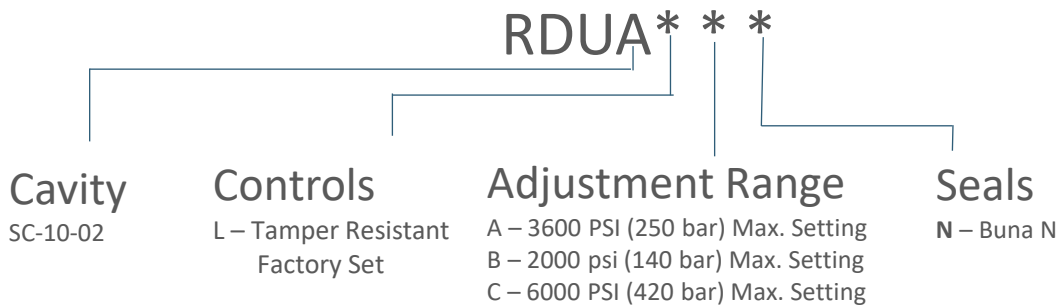


RDU A

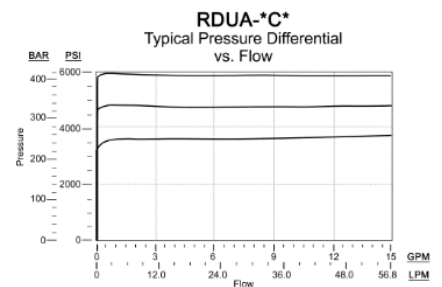
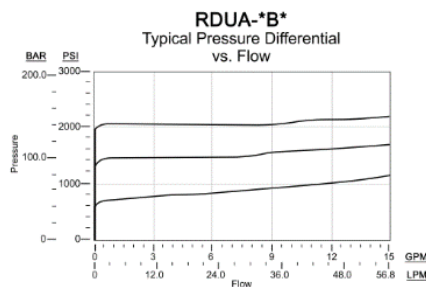
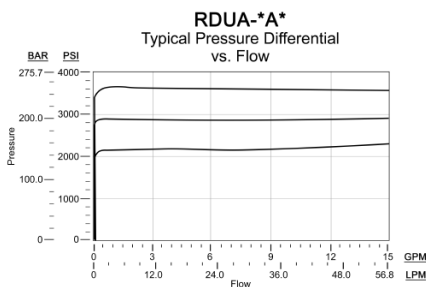
Technical Data

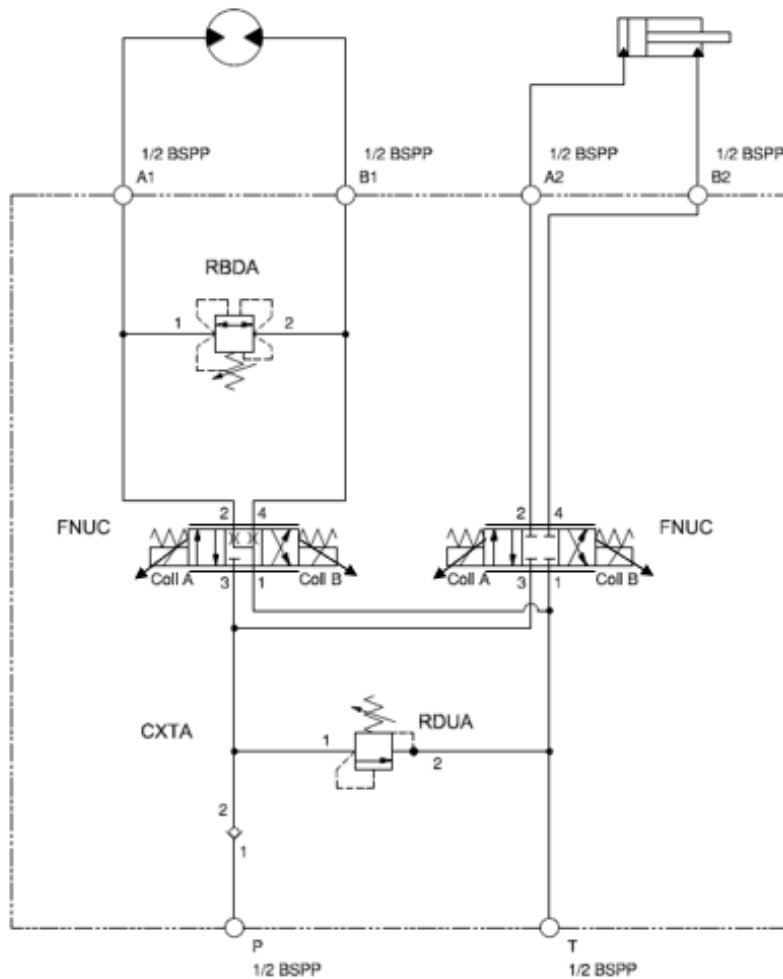
Cavity	SC-10-02	
Series	1C	
Maximum Flow Rate	10 GPM	40 L/min
Maximum Operating Pressure	6000 PSI	420 bar
Typical Valve Leakage at 110 SUS (24 cSt)	0.6 in ³ /min (10 ml/min) @ 90% of valve setting	
Response Time - Typical	2 ms	
Factory Pressure Settings Established at	1 gpm	4 L/min
Valve Hex Size	24 mm	
Valve Installation Torque	42-46 lbf ft	57 – 62 Nm

Model Code Options



Performance Data





The RDUA is a compact, economical, direct-acting relief valve where pressure is at port 1, and tank is connected to port 2. In compact mobile machinery, such as this scissor lift, the smallest and most economical solution is often requested. With a fast-acting response time, this direct acting relief valve will clip pressure spikes with a 2ms response time.



delivering
innovative fluid power
solutions
that enhance our world

**Sun Hydraulics
Headquarters**
Sarasota, FL USA
Ph: +1 941-362-1200

Sun Hydraulics Limited
Coventry, England
Ph: +44-2476-217-400

Sun Hydraulik GmbH
Erkelenz, Germany
Ph: +49-2431-8091-0

Sun Hydraulics (India)
Bangalore, India
Ph: +0091-80-28456325

**Custom Fluidpower
Pty Ltd**
(A Sun Hydraulics
Company)
Newcastle, Australia
Ph: +61 02 4953 5777

**Sun Hydraulics Korea
Corp.**
Incheon, Korea
Ph: +82-32-813-1350

**Sun Hydraulics China
Co. Ltd**
Shanghai, China
Ph: +86 2162 375885

**Sun Hydraulics
(S. America)**
Rosario, Argentina
Ph: +54 9 341 584 3075